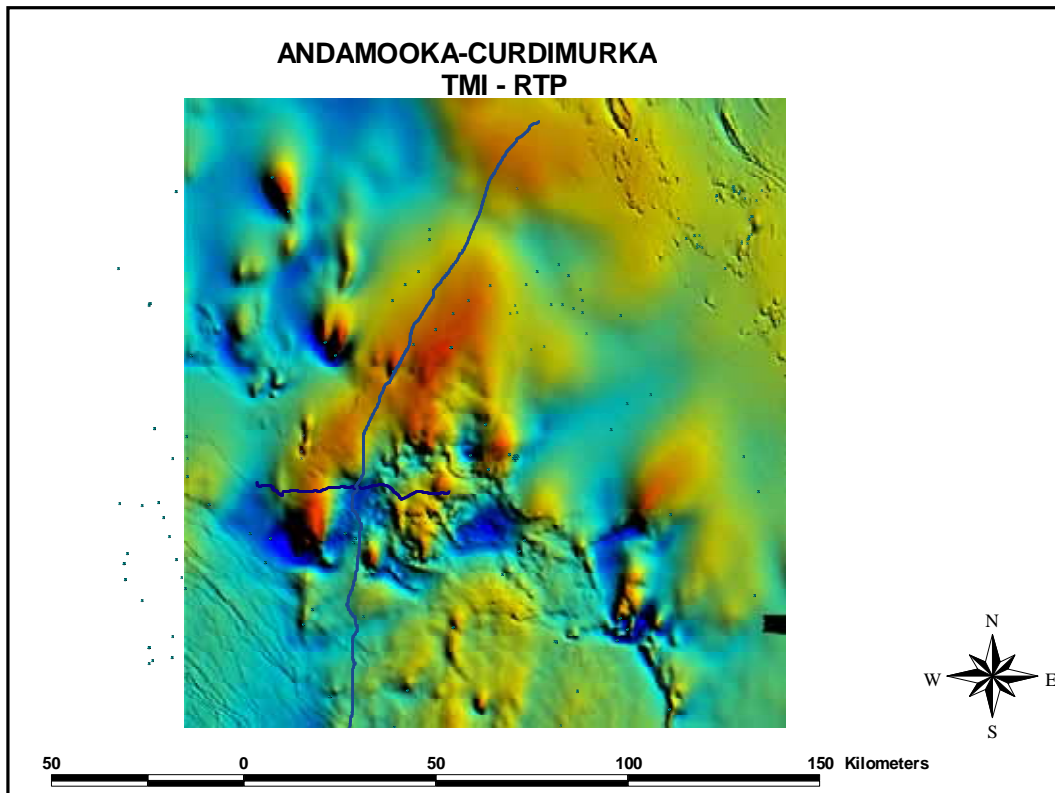


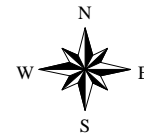
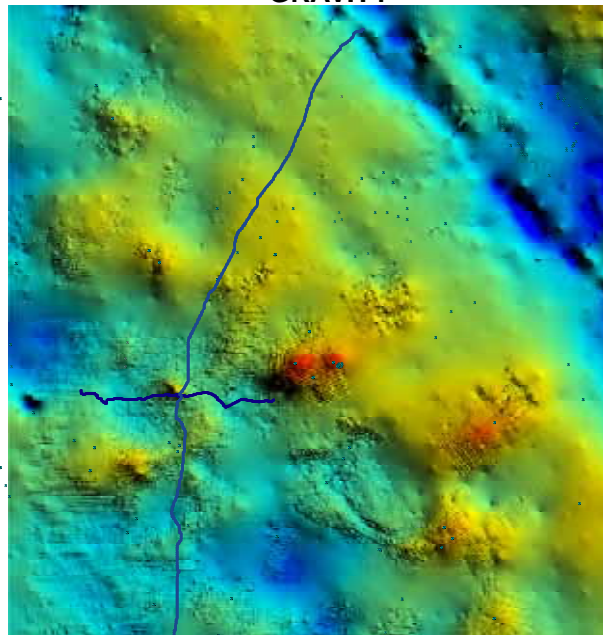
GAWLER CRATON COVER SUCCESSION: STUART SHELF TO ADELAIDE GEOSYNCLINE TRANSITION

*Wolfgang Preiss, Russell Korsch and Jennifer
Totterdell*

gawler craton
state of play 2004



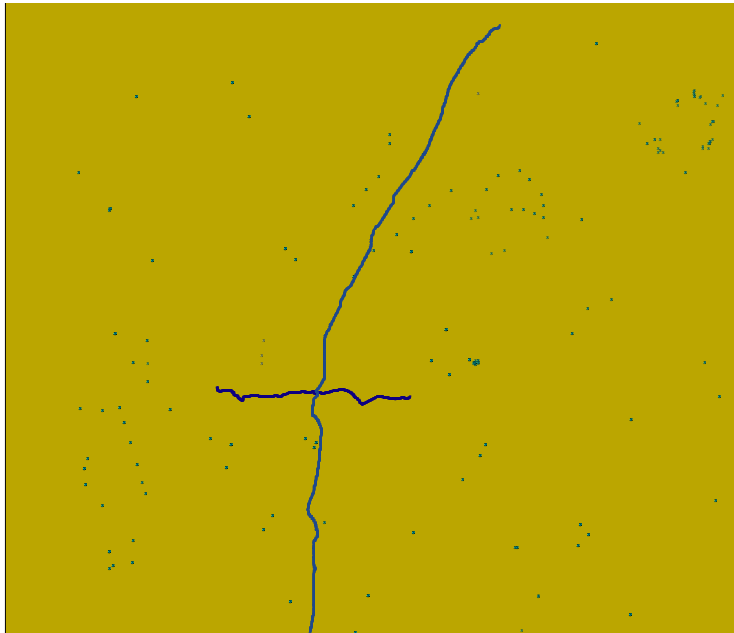
ANDAMOOKA-CURDIMURKA GRAVITY



50 0 50 100 150 Kilometers

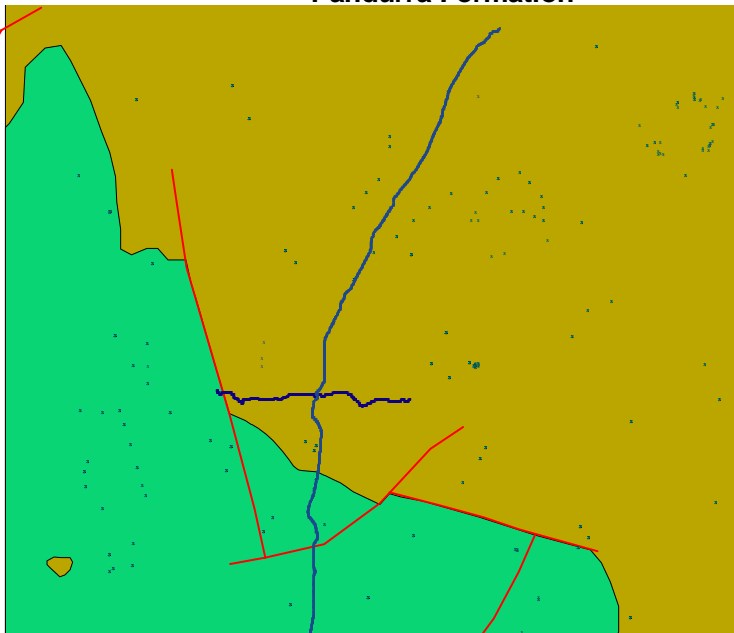
| PROTEROZOIC AND CAMBRIAN COVER STRATIGRAPHY | | | | |
|---|------------|---------------------------------------|---|--|
| Age | Groups | Subgroups | Lithologies | Formations represented on seismic transect |
| PALAEOZOIC Early Cambrian | UNNAMED | unnamed | Redbeds | Yaraventa Shale |
| | | HAWKER | unnamed | Limestone |
| <i>low-angle unconformity</i> | | | | |
| NEOPROTEROZOIC Marinoan | VILPENA | Upper Vilpema Group (incl. Pound Gpp) | Orthoquartzite, redbeds, limestone, siltstone red mudstone | not represented Yalbu Shale |
| | | Sandison | Sandstone, siltstone, basal 'cap' dolomite | Trot Hill Formation, Muccalena Formation |
| | | Yerelina | Siltstone, sandstone, diamictite | Vilpema Sandstone, Elatha Formation |
| | | Umberatana | Siltstone, sandstone, redbeds, limestone, dolomite | 'Yuthapina beds', Argypena Formation |
| Sturtian | UMBERATANA | Neggie | Siltstone, limestone, basal shale and 'cap' dolomite | Trot Hill Formation, Muccalla Dolomite Member |
| | | Yudamatana | Diamictite, siltstone, sandstone, conglomerate | Eltha (Elthana Tillite), Vilpema Formation |
| | | BURRA | Siltstone, sandstone, quartzite, arkose | not represented |
| Torresian | BURRA | Bungarider | Siltstone, sandstone, dolomite | Nginji Springs Formation |
| | | Mundalloo | Shallow water dolomite, magnesite, siltstone, sandstone | Milkygate Dolomite |
| | | Emerton | Sandstone, quartzite, siltstone, arkose | Vitrolina Quartzite, Villawalla Fm, Top Mount Sandstone |
| | | CALLANNA | Curdimurka | Sandstone, siltstone, dolomite, limestone, evaporites, minor volcanics |
| Villouran | CALLANNA | Arkose | Mafic volcanics, carbonate, basal clastics | Endo Volcanics, Noranda Volcanics, Black Knob Marble, Bony Point Formation |
| | | <i>major unconformity</i> | | |
| NEOPROTEROZOIC | | | Flint sandstone | Pandura Formation, intruded by Gardner Gabbro dyam |

**ANDAMOOKA-CURDIMURKA
BASEMENT**

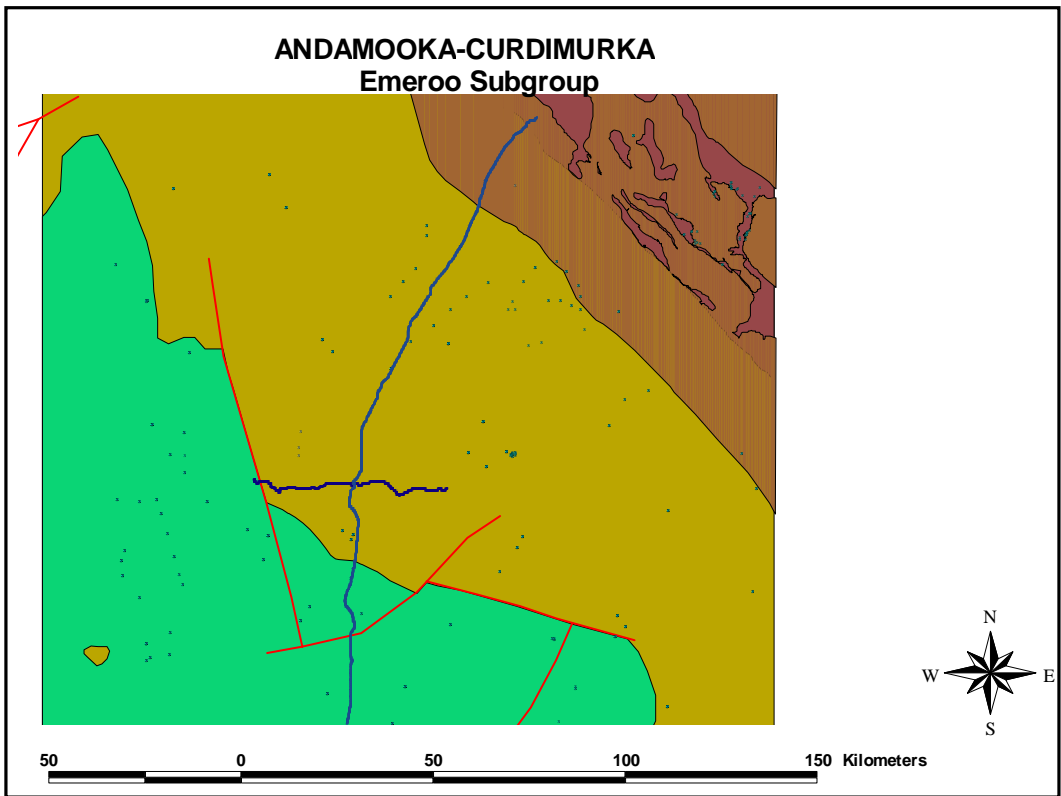
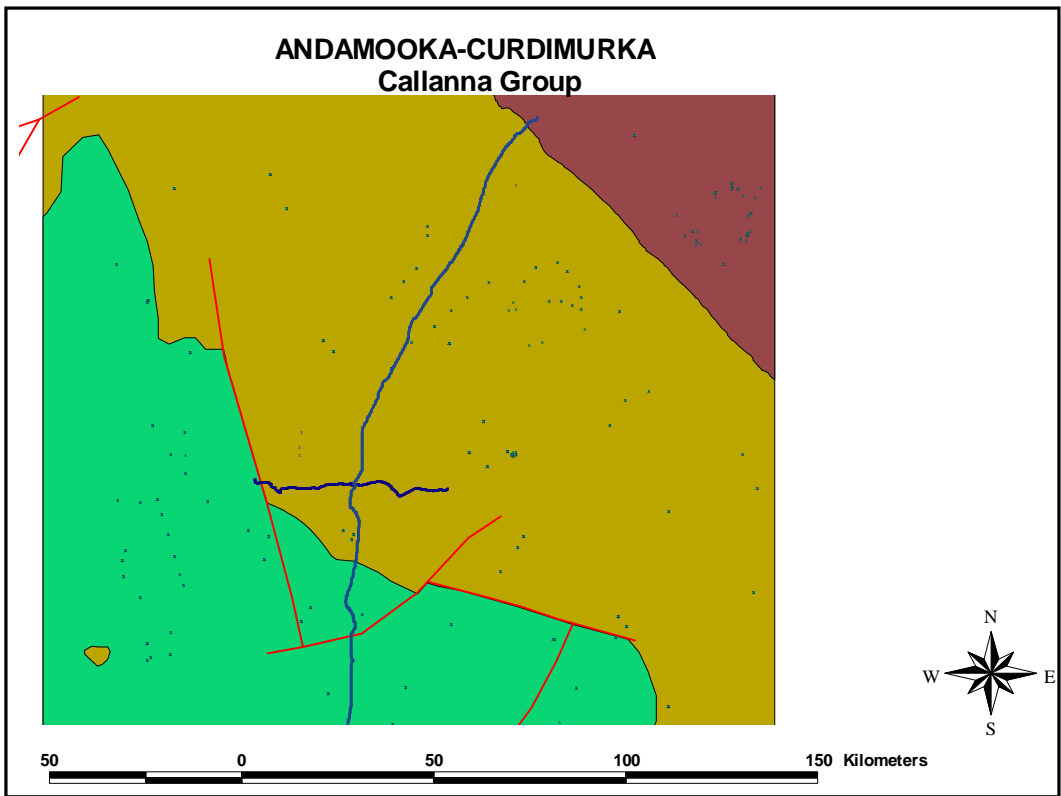


50 0 50 100 150 Kilometers

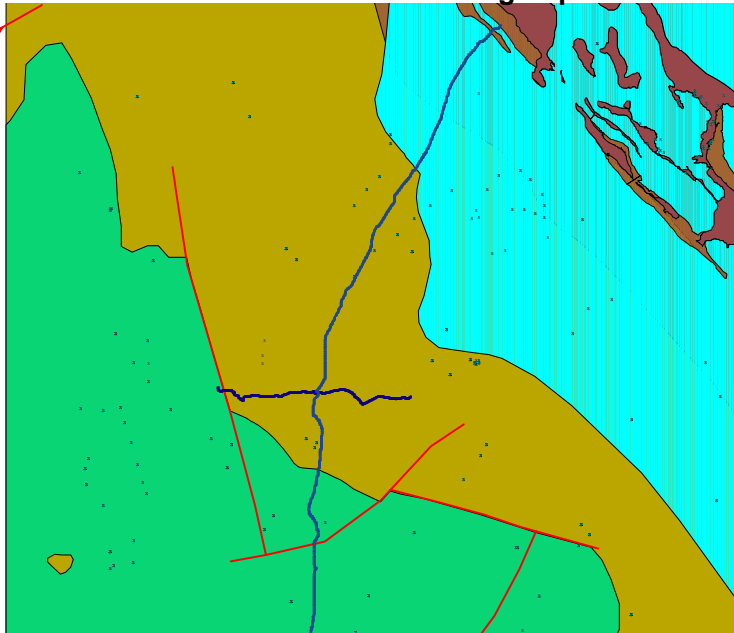
**ANDAMOOKA-CURDIMURKA
Pandurra Formation**



50 0 50 100 150 Kilometers



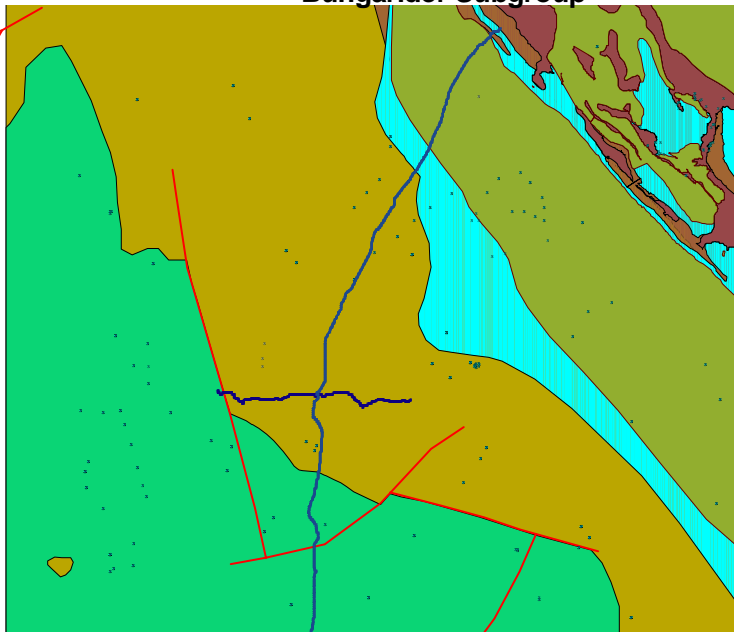
**ANDAMOOKA-CURDIMURKA
Mundallio Subgroup**



50 0 50 100 150 Kilometers



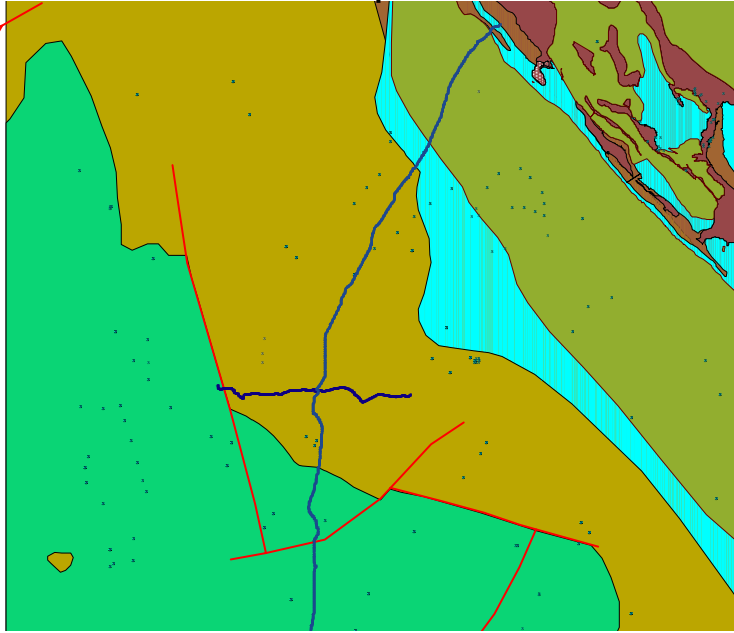
**ANDAMOOKA-CURDIMURKA
Bungarider Subgroup**



50 0 50 100 150 Kilometers

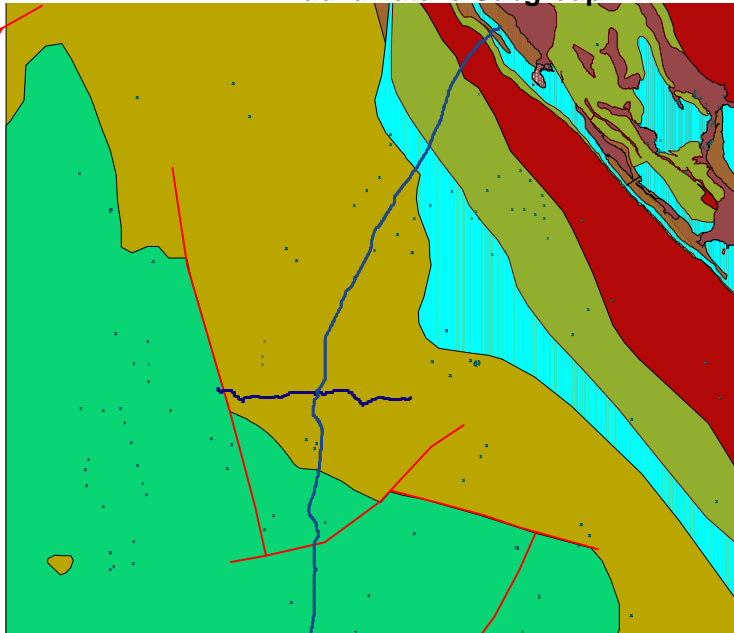


**ANDAMOOKA-CURDIMURKA
diapiric breccia**

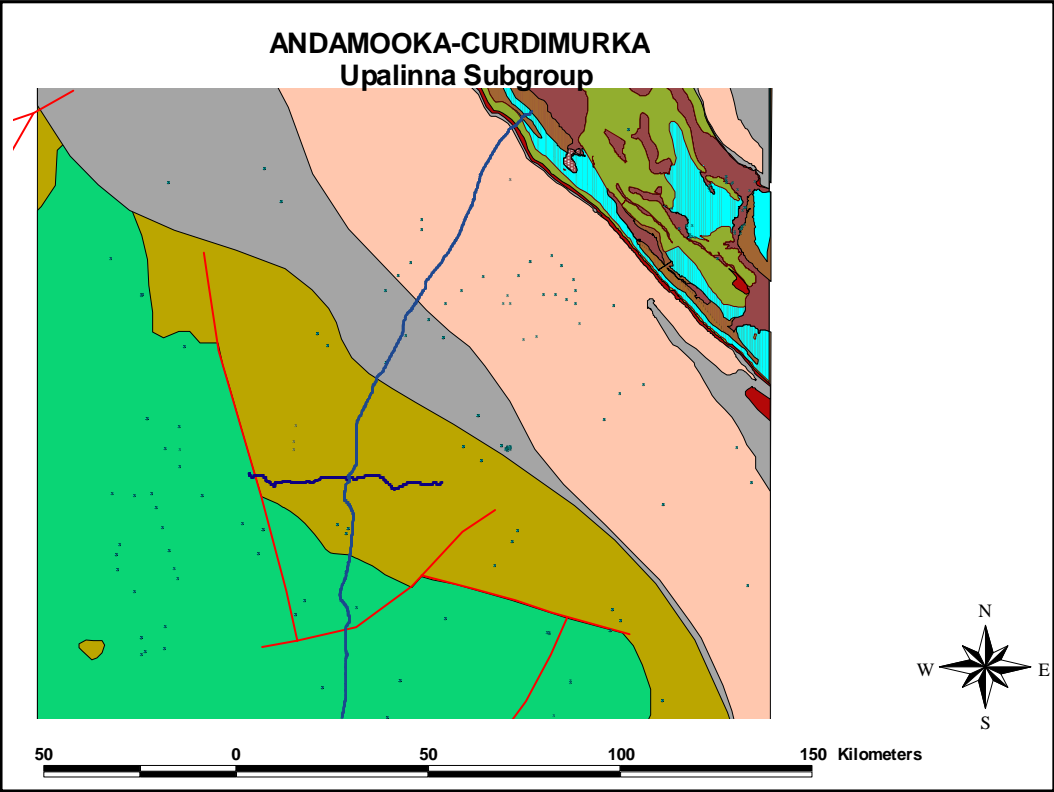
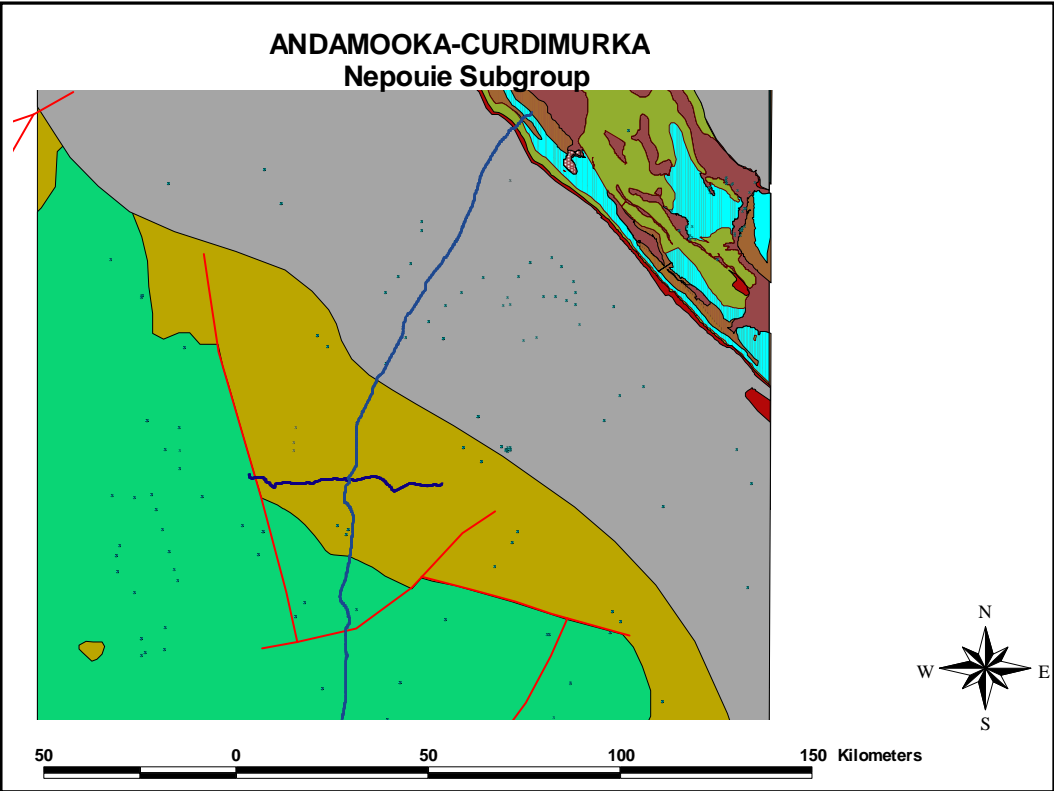


50 0 50 100 150 Kilometers

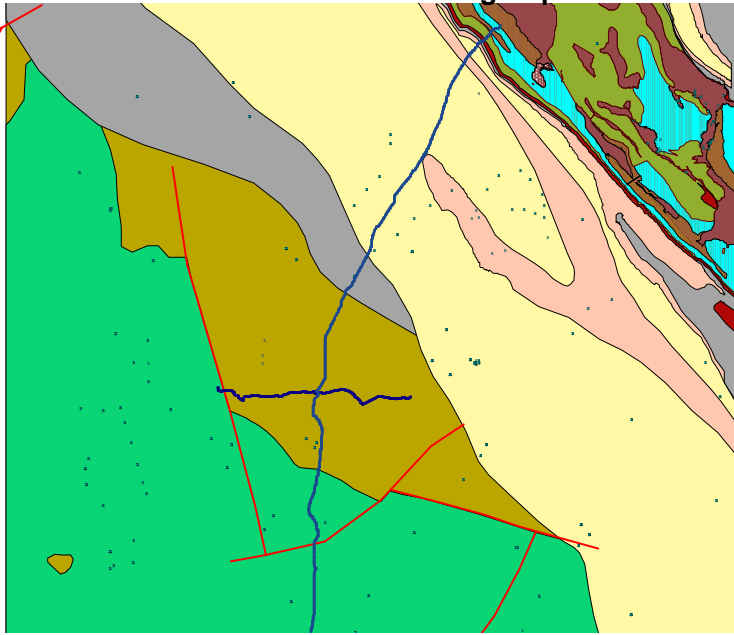
**ANDAMOOKA-CURDIMURKA
Yudnamutana Subgroup**



50 0 50 100 150 Kilometers

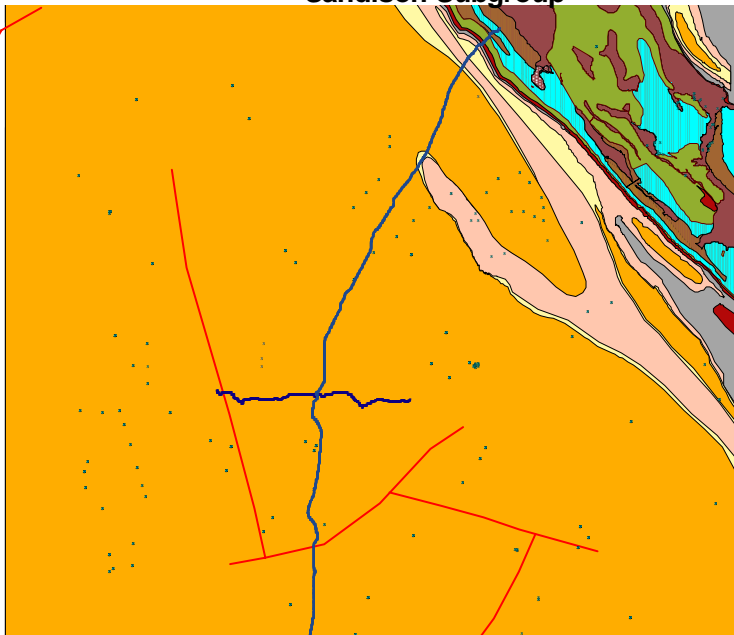


ANDAMOOKA-CURDIMURKA
Yerelina Subgroup



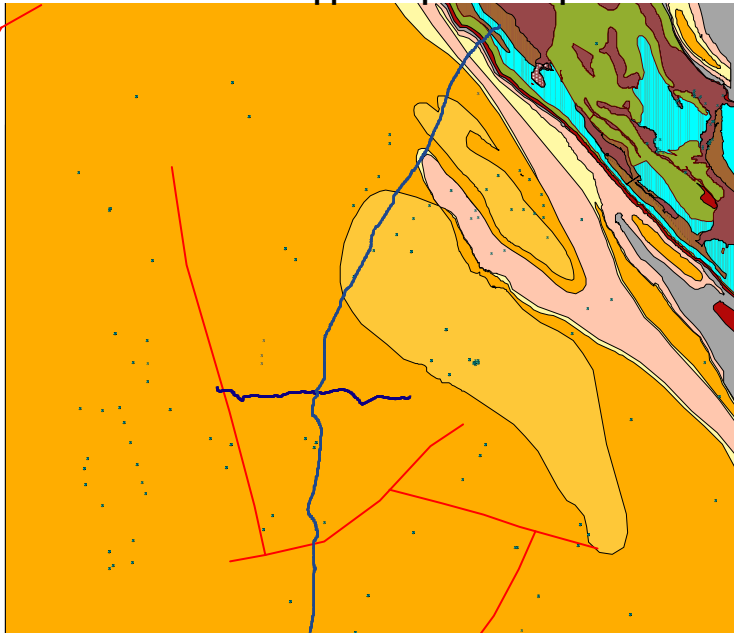
50 0 50 100 150 Kilometers

ANDAMOOKA-CURDIMURKA
Sandison Subgroup



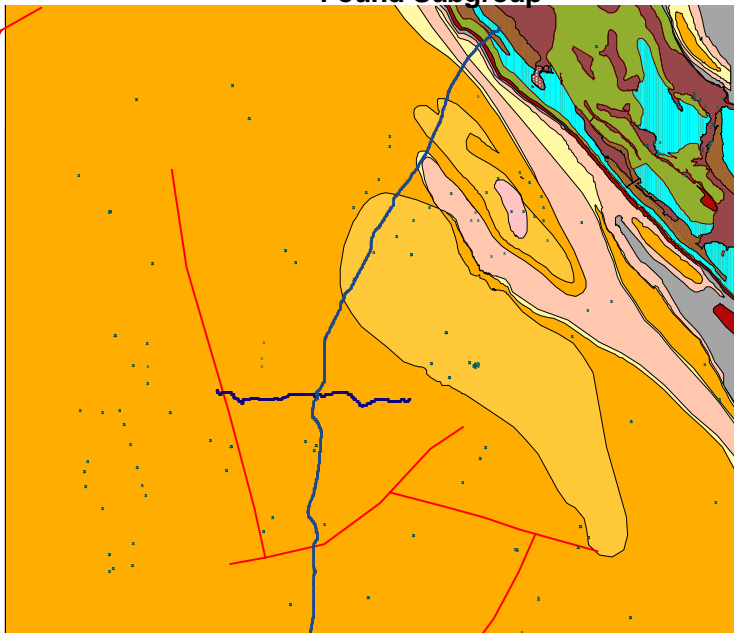
50 0 50 100 150 Kilometers

**ANDAMOOKA-CURDIMURKA
Upper Wilpena Group**



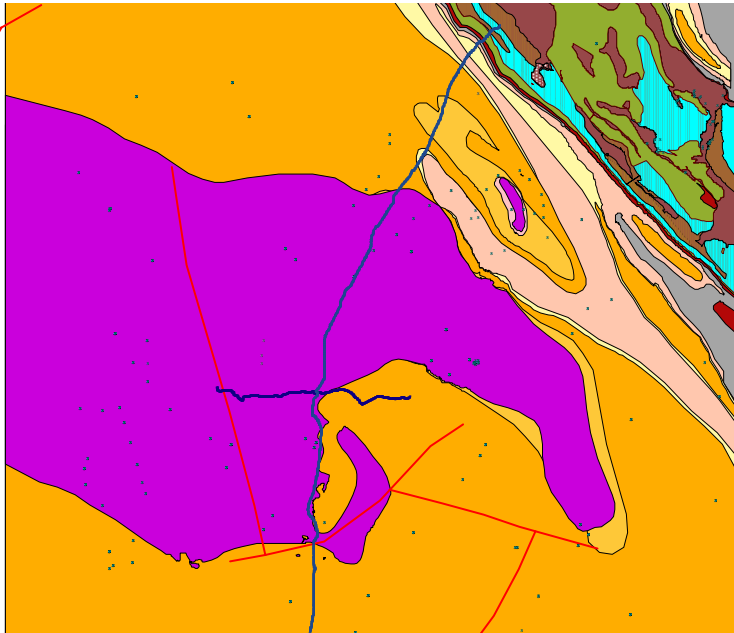
50 0 50 100 150 Kilometers

**ANDAMOOKA-CURDIMURKA
Pound Subgroup**



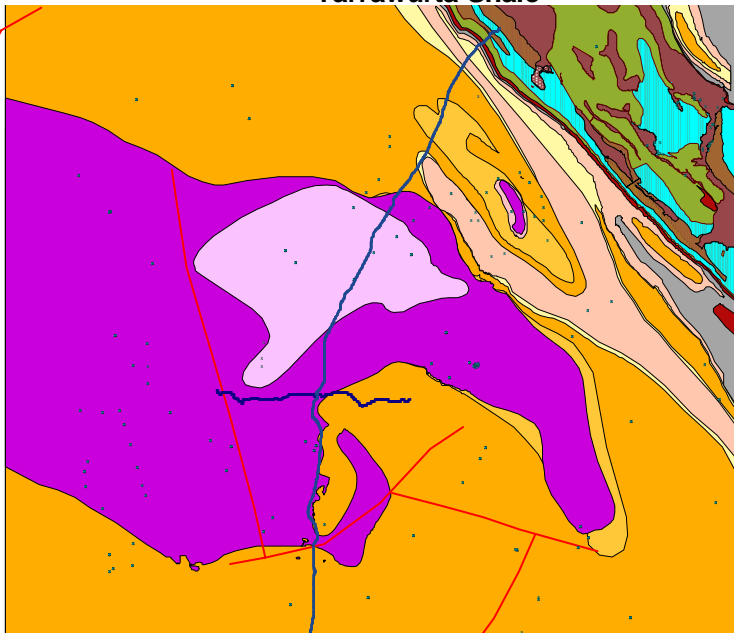
50 0 50 100 150 Kilometers

ANDAMOOKA-CURDIMURKA
Andamooka Limestone



50 0 50 100 150 Kilometers

ANDAMOOKA-CURDIMURKA
Yarrowurta Shale



50 0 50 100 150 Kilometers

