

Harris Greenstone Domain

Michael Schwarz

Gawler Craton Program Leader

PIRSA

gawler craton
state of play 2004

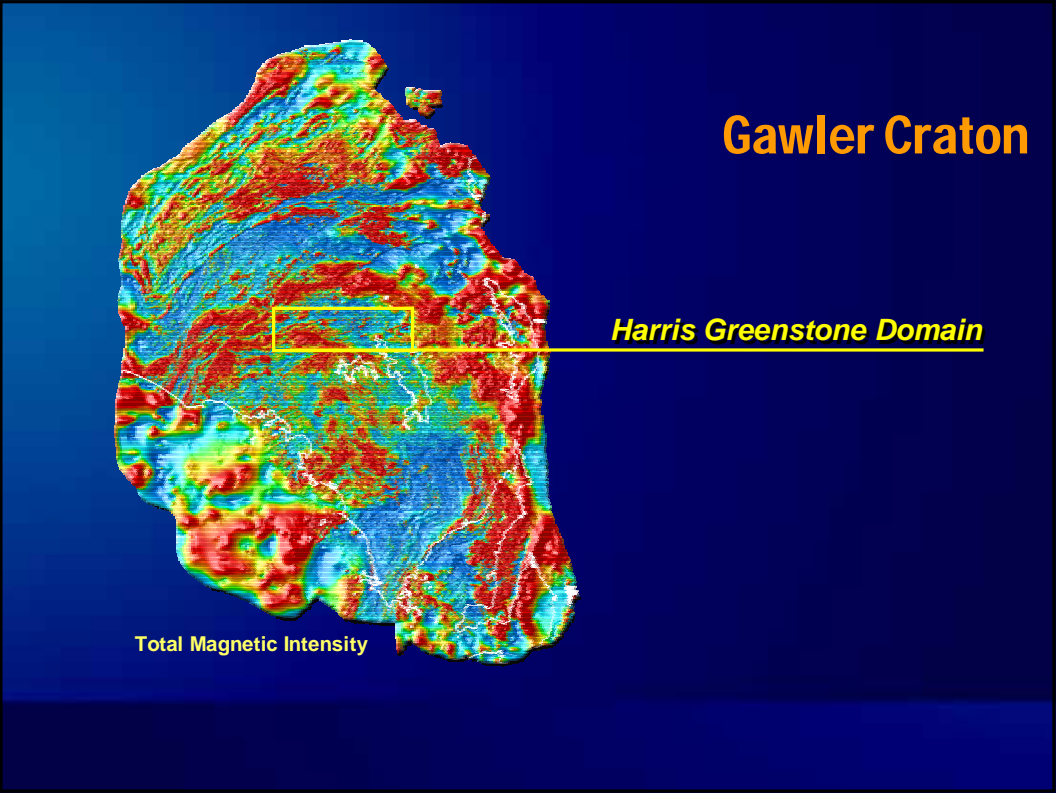
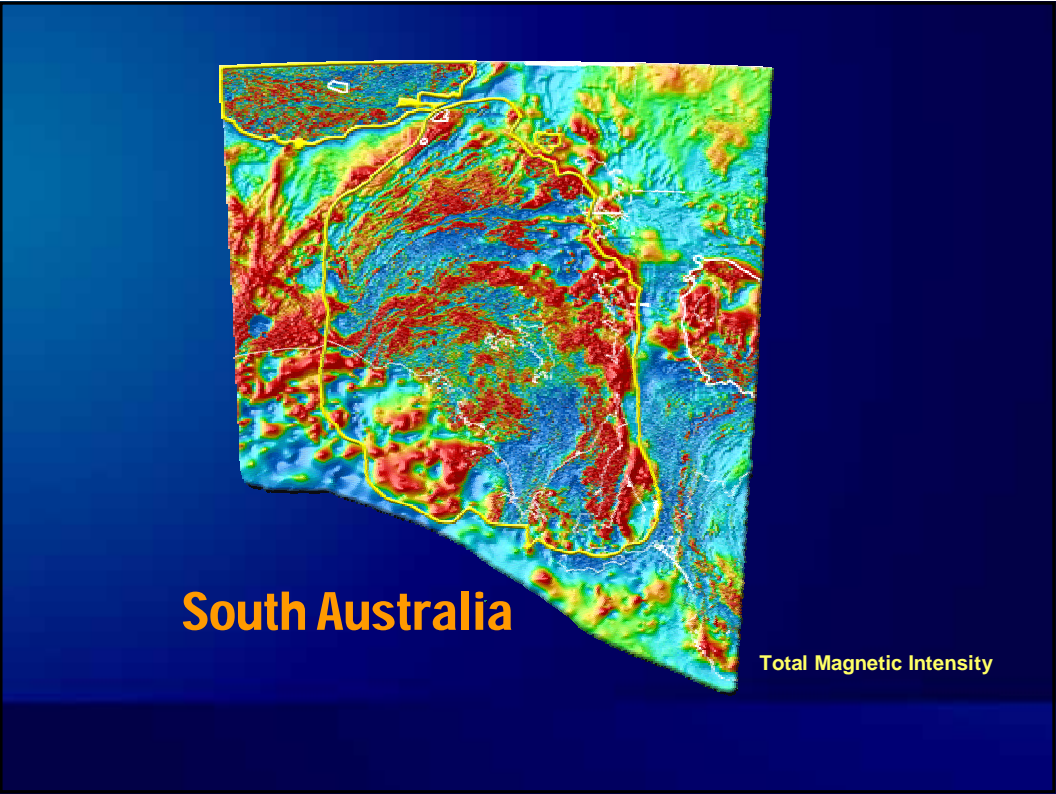


Harris Greenstone Domain

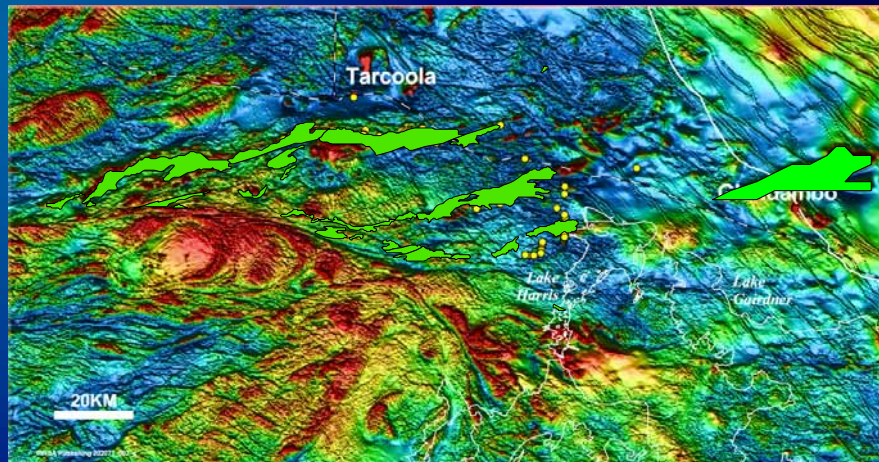
- Location
- What is the Harris Greenstone Domain?
- Harris Greenstone GIS – not the standard PIRSA GIS
- Prospectivity – positives and negatives

gawler craton
state of play 2004





Harris Greenstone Domain



Total Magnetic Intensity

• PIRSA drillholes

Lake Harris Komatiite — Harris Greenstone Domain

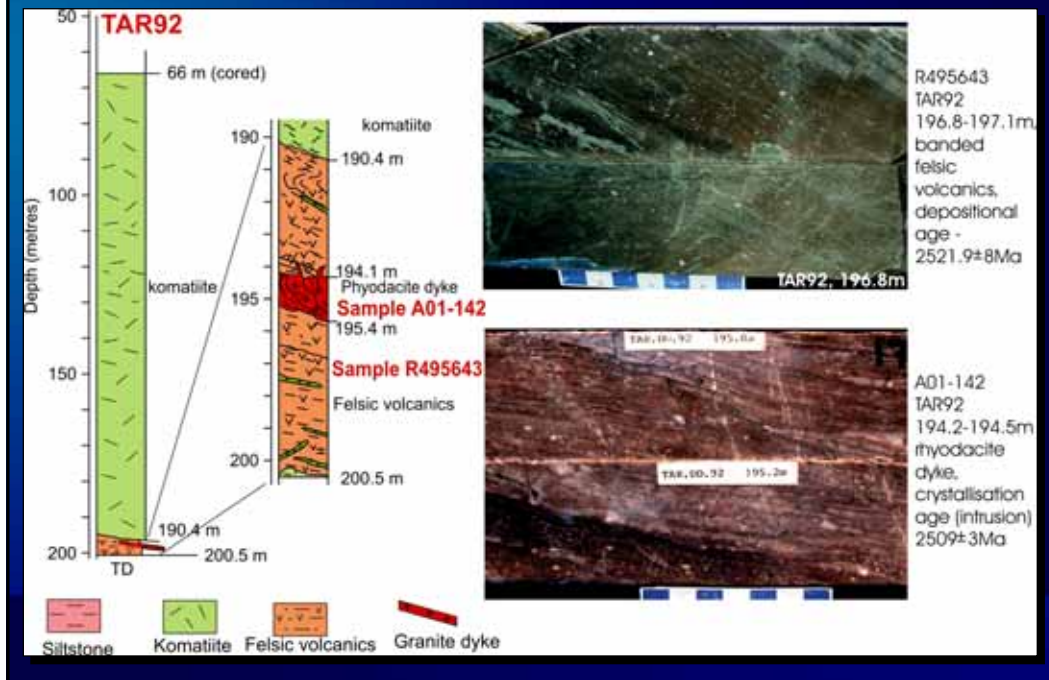
Komatiites occur within a complex isoclinal fold or folds ~250 x 50 km

Interlayered with komatiitic basalt, basalt, rhyodacite and thin BIF and carbonaceous sulphidic sediments

Adcumulate, cumulate, spinifex textures and flow-top breccias recognised

Composite thickness ~1700 m; individual flows 2 to 130 m thick indicate channel and overbank environments

Age

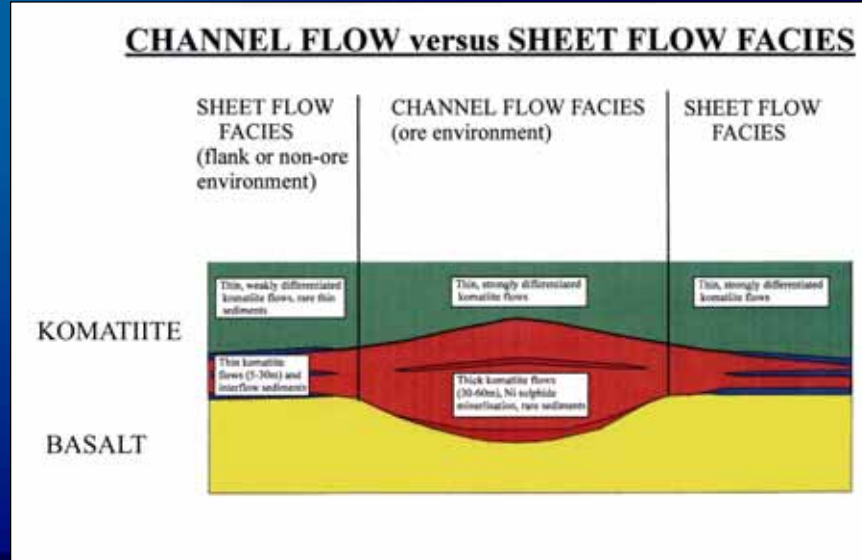


Exploration Considerations: Positives

Extensive magmatic systems — 100s of km with variety of Al-depleted komatiites (43–18% MgO) — <1% stratigraphy tested

Preserved volcanic facies: thick (80–130 m) channel and composite thin (2–40 m) flows

Exploration Considerations: Positives



Exploration Considerations: Positives

Extensive magmatic systems — 100s of km with variety of Al-depleted komatiites (43–18% MgO) — <1% stratigraphy tested

Preserved volcanic facies: thick (80–130 m) channel and composite thin (2–40 m) flows

Dominantly fertile S-undersaturated magmatic systems with low S (100–600 ppm) and high Pd+Pt (5–30 ppb)

Similar broad setting, rock types and primitive compositions to greenstones in Eastern Goldfields and Southern Cross Provinces

Exploration Considerations: Negatives

Poor outcrop and extensive cover, predominantly 0–20 m thick

Amphibolite facies overprint, and sheared contacts with country rocks

No evidence to date of assimilation of S-bearing country rocks

Exploration Considerations: Positives

Extensive magmatic systems

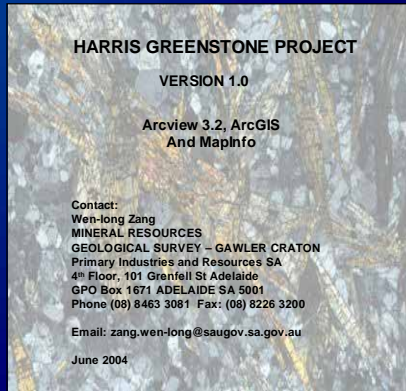
Preserved volcanic facies: thick channels

Dominantly fertile S-undersaturated magmatic systems

Similar broad setting, rock types and primitive compositions to greenstones in Eastern Goldfields and Southern Cross Provinces

Harris Greenstone GIS

- A new draft Harris Greenstone Domain GIS is now available
- In your conference satchels
- Mapinfo, Arcview 3.2 and ArcGIS formats



gawler craton
state of play 2004



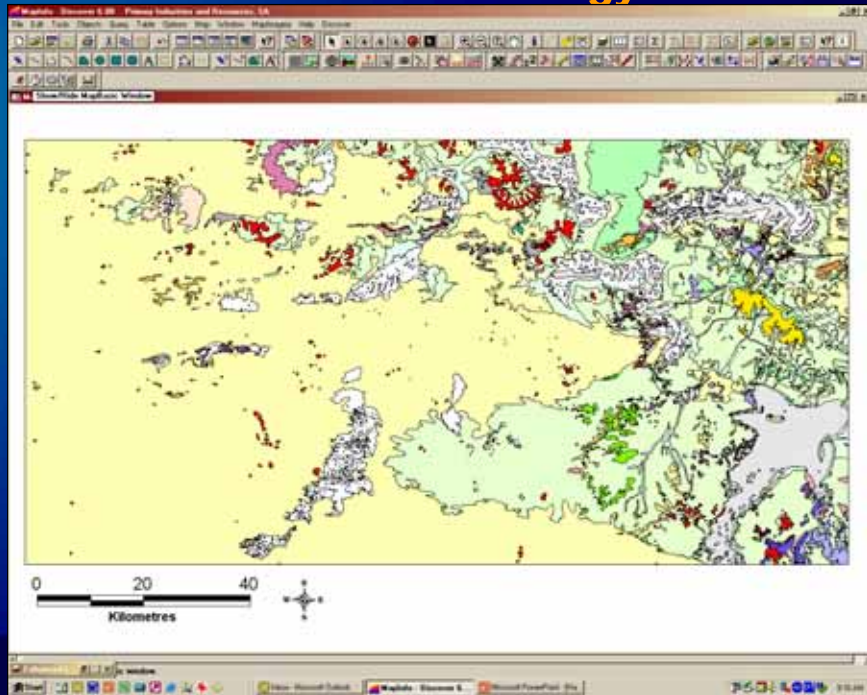
Project Contributors

- Marc Davies – Drilling, GIS, mineral potential and company exploration data
- Dean Hoatson – Prospectivity/mineral potential
- Wenlong Zang – GIS and geological framework
- Malcolm Sheard - Regolith
- Baohong Hou – Palaeochannel systems
- Alan Mauger – Remote sensing, PIMA and Hylogger data
- Paul Rogers – Sedimentary cover

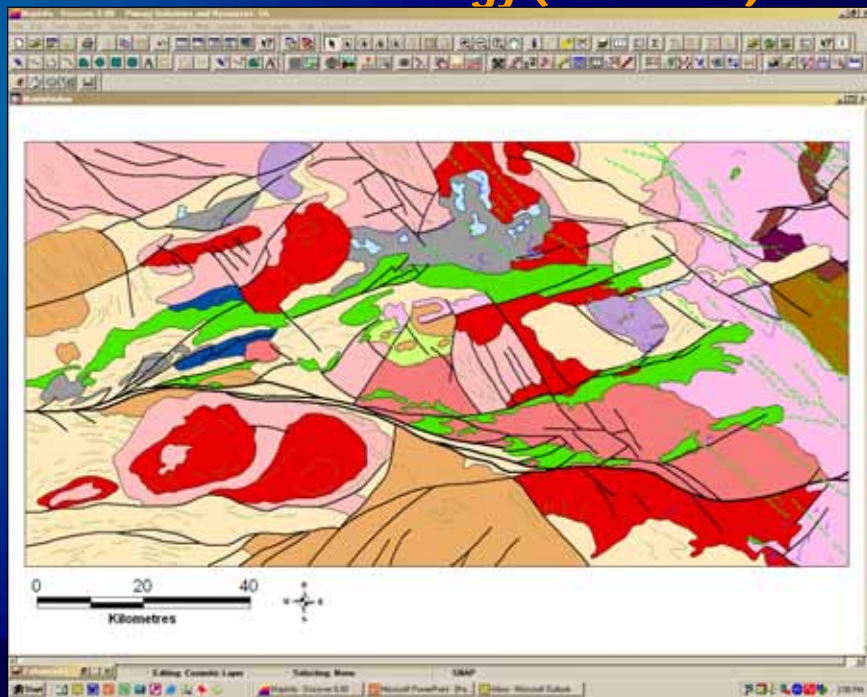
gawler craton
state of play 2004



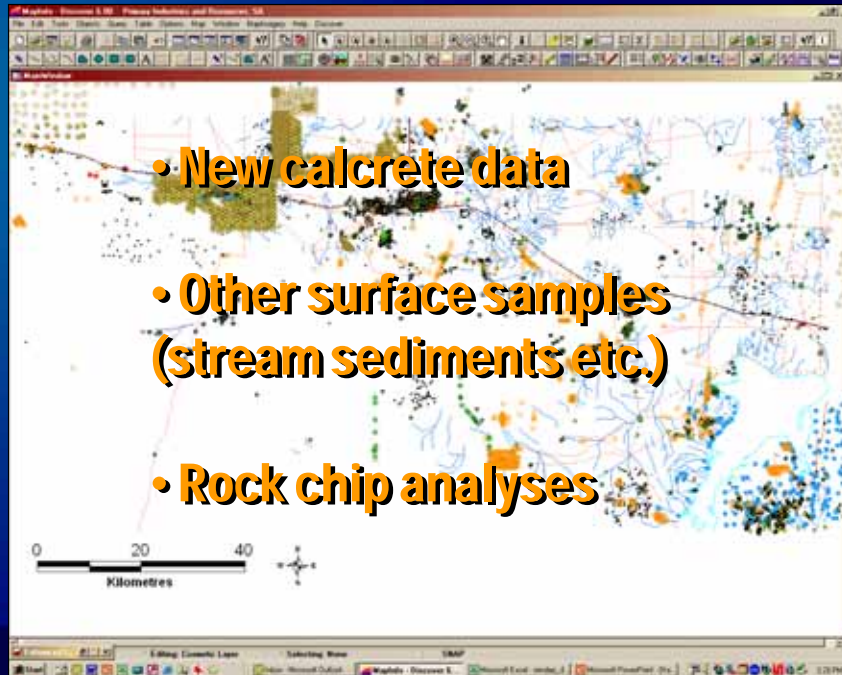
Seamless Geology



Basement Geology (GA/PIRSA)

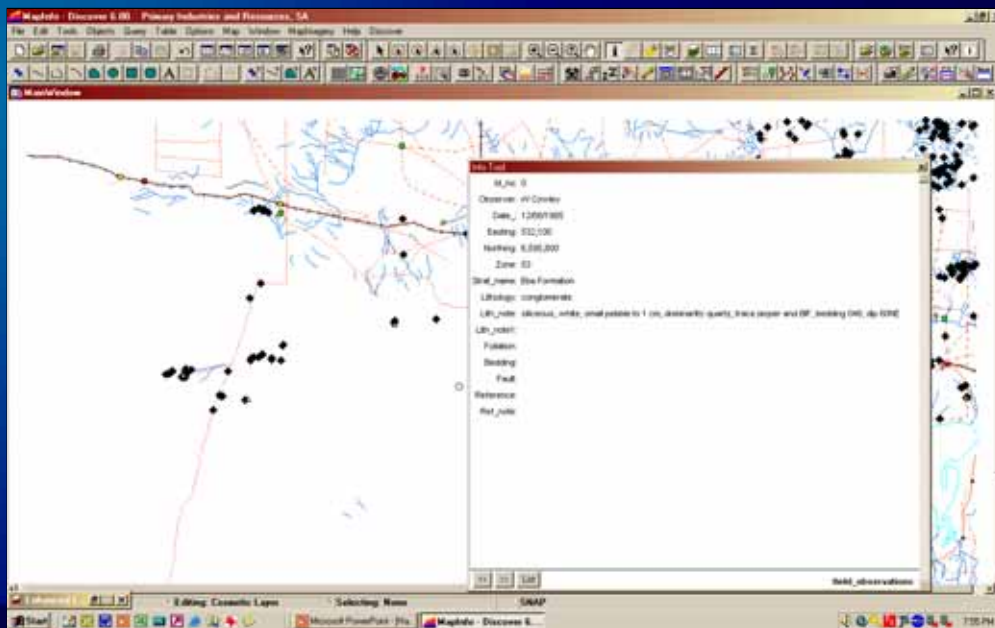


Surface Geochemistry

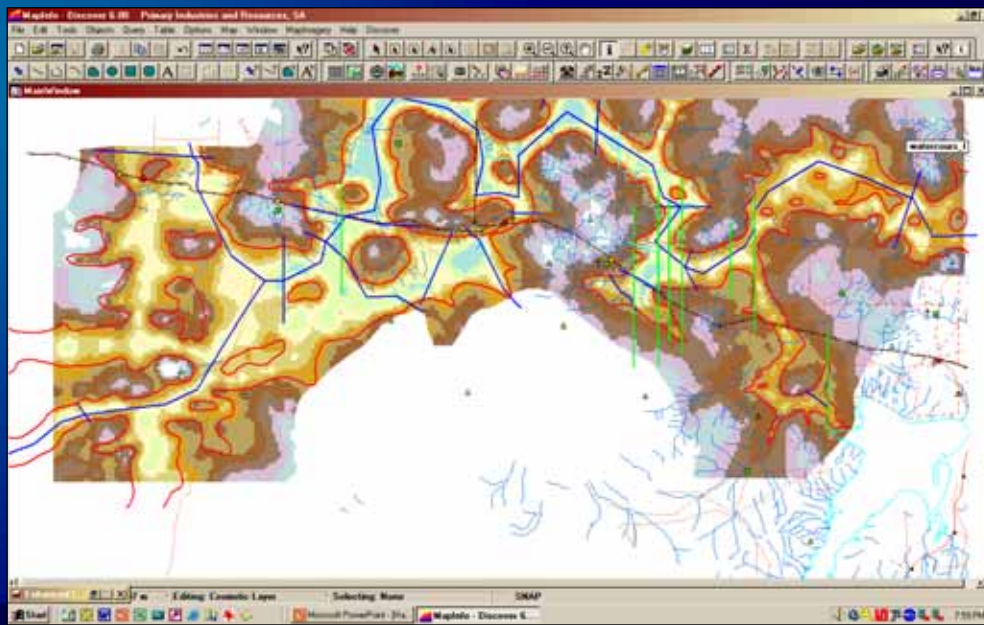


- **New calcrete data**
- **Other surface samples (stream sediments etc.)**
- **Rock chip analyses**

Field Observations



Palaeochannels



Regolith

